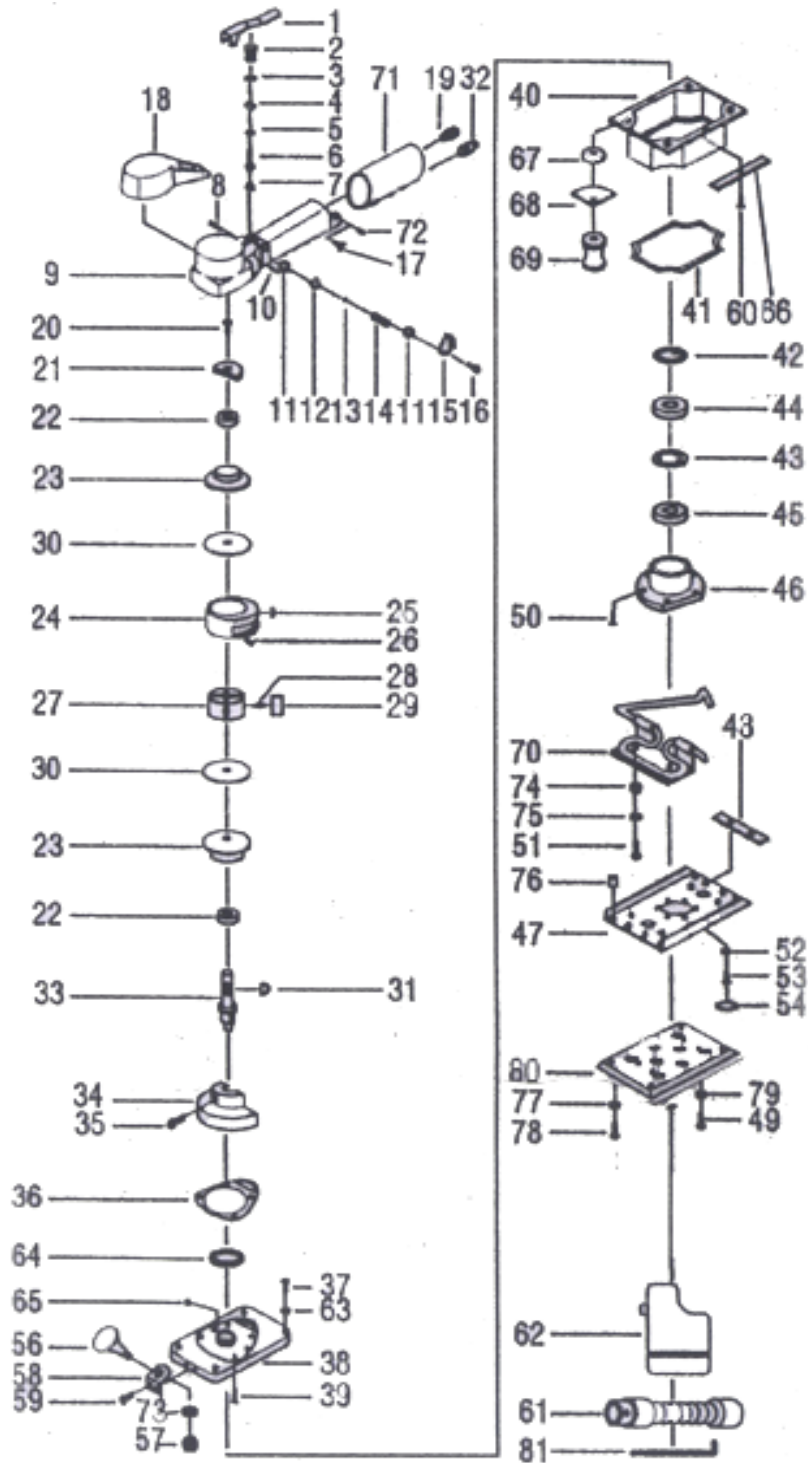


# OS37SG HD ORBITAL SANDER PRODUCT # 403307



# OS37SG HD ORBITAL SANDER PRODUCT # 403307

REF	PART NUMBER	DESCRIPTION	REQ	REF	PART NUMBER	DESCRIPTION	REQ
1	PUT-OS37SG-1	Lever	1	41	PUT-OS37SG-41	Skirt Felt	1
2	PUT-OS37SG-2	Valve Seat	1	42	PUT-OS37SG-42	Snap Ring (R26)	1
3	PUT-OS37SG-3	O-ring ( 8.8 *2)	2	43	PUT-OS37SG-43	Flet Ring	1
4	PUT-OS37SG-4	Wave Washer	1	44	PUT-OS37SG-44	Dust Seal	1
5	PUT-OS37SG-5	O-ring ( 3.7 * 1.7 )	1	45	PB6000-2Z	Beairng (6000UU)	2
6	PUT-OS37SG-6	Valve	1	46	PUT-OS37SG-46	Shoe Bearing Case	1
7	PUT-OS37SG-7	Spring	1	47	PUT-OS37SG-47	Shoe Bearing Case	1
8	PUT-OS37SG-8	Roll Pin ( 3 * 20)	1	48	PUT-OS37SG-48	Clip Weight	2
9	PUT-OS37SG-9	Body	1	49	PUT-OS37SG-49	Fillister (M5*10)	4
10	PUT-OS37SG-10	Pin ( 3.2 * 19)	1	50	PUT-OS37SG-50	Flat Head (M4*8)	6
11	PUT-OS37SG-11	Snap Ribng (S10)	2	51	PUT-OS37SG-51	Flat Head (M4*8)	4
12	PUT-OS37SG-12	Wave Washer	1	52	PUT-OS37SG-52	Thrust Washer	1
13	PUT-OS37SG-13	O-ring ( 6.7 *1.75)	1	53	PUT-OS37SG-53	Flat Head (M5*10)	1
14	PUT-OS37SG-14	Regulator	1	54	PUT-OS37SG-54	Packing	1
15	PUT-OS37SG-15	Regulator Lever	1	56	PUT-OS37SG-56	Front Knob	1
16	PUT-OS37SG-16	Fillister ( M4 * 6)	1	57	PUT-OS37SG-57	Nut (3/8" *24UN)	1
17	PUT-OS37SG-17	Wing Bolt	1	58	PUT-OS37SG-58	Bracket	1
18	PUT-OS37SG-18	Body Cover	1	59	PUT-OS37SG-59	Screw(M5*10)	1
19	PUT-OS37SG-19	Nipple	1	60	PUT-OS37SG-60	Fillister(M4*6)	2
20	PUT-OS37SG-20	Flat Head ( M5 * 10 )	1	61	PUT-OS37SG-61	Vacuum Hose	2
21	PUT-OS37SG-21	U-Balancer	1	62	PUT-OS37SG-62	Dust Bag	1
22	PB6201-2Z	Bearing ( 6201ZZ)	2	63	PUT-OS37SG-63	Spring Washer(S5)	1
23	PUT-OS37SG-23	Bearing Plate	2	64	PUT-OS37SG-64	Flet Ring	4
24	PUT-OS37SG-24	Cylinder	1	65	PUT-OS37SG-65	Set Bolt (M5*12)	1
25	PUT-OS37SG-25	O-ring (5.7*1.7)	1	66	PUT-OS37SG-66	Skirt Liner	4
26	PUT-OS37SG-26	Roll Pin ( 3*5)	1	67	PUT-OS37SG-67	Washer	2
27	PUT-OS37SG-27	Rotor	1	68	PUT-OS37SG-68	Skirt Clamper	4
28	PUT-OS37SG-28	Vane Spring	4	69	PUT-OS37SG-69	Support	4
29	PUT-OS37SG-29	Vane	4	70	PUT-OS37SG-70	Clip	4
30	PUT-OS37SG-30	Side Plate	2	71	PUT-OS37SG-71	Cover	2
31	PUT-OS37SG-31	Key-Rotor ( 4*19)	1	72	PUT-OS37SG-72	Set Bolt(M4*4)	1
32	PUT-OS37SG-32	Exhaust Tube	1	73	PUT-OS37SG-73	Spring Washer(S10)	1
33	PUT-OS37SG-33	Rotor Shaft	1	74	PUT-OS37SG-74	Nut(M4)	1
34	PUT-OS37SG-34	L-Balancer	1	75	PUT-OS37SG-75	Thrust Washer(M4)	4
35	PUT-OS37SG-35	Hex Bolt (M5*25)	1	76	PUT-OS37SG-76	Fastener(M4*0.7)	4
36	PUT-OS37SG-36	Body Gasket	1	77	PUT-OS37SG-77	Spring Washer(S4)	4
37	PUT-OS37SG-37	Fillister (M5*15)	4	78	PUT-OS37SG-78	Fillister(M4*12)	4
38	PUT-OS37SG-38	Base Plate	1	79	PUT-OS37SG-79	Spring Washer(S4)	4
39	PUT-OS37SG-39	Flate Heat ( M5*12)	4	80	PUT-OS37SG-80	Pad(3+2+3)-Vinyl	1
40	PUT-OS37SG-40	Skirt	1	81	PUT-OS37SG-81	Long Hook	1