

MANUAL ADJUSTABLE TROLLEYS

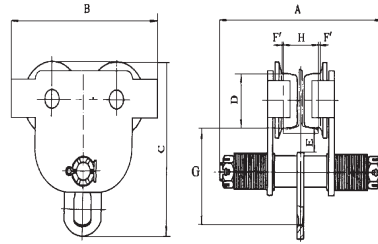


Hardened steel wheels meet ANSI B30.11 standards – Check & Compare!

All units now have standard 8" capacity bolts for use on wider beams – Check & Compare!

JET SBT SERIES BALL BEARING TROLLEYS

- Double sealed ball bearings for long life
- Use on straight or curved track
- Safety lugs provide insurance against falling
- Can be installed or removed at any point along the track
- Adjustable to fit various sizes of flange and I-beams
- Built-in bumper guards and drop stops
- Can be used with H, I, W and S-beams
- Specially hardened steel wheels meet ANSI B30.11 and EEC specifications (Certificate included)
- Up to 8" beam standard



Extension kits available See page 21

PROD. NO.	Rated Cap'y (Tons)	Rated Cap'y (lbs)	I-Beam Flange Width (H)	Min. Radius Curve	DIMENSIONS IN INCHES						Wt. G	Net Wt. (lbs)	Ship (lbs)
					A	B	C	D	E	F			
120251	1/2	1,100	3-1/4"-8-1/32"	36"	10-1/4	8-1/2	8-1/8	2-1/4	1-1/4	1/8	4-41/64	16	21
120252	1	2,200	4"-8-1/32"	40"	10-3/4	10-1/4	9-3/8	2-15/16	1-1/4	1/8	5-13/64	28	34
120253	1-1/2	3,300	4"-8-1/32"	40"	11-1/4	10-3/4	10	3-3/8	1-1/8	1/8	5-1/4	42	45
120254	2	4,400	4"-8-1/32"	43"	13-5/8	11-7/8	10-15/16	3-1/2	1-1/8	1/8	6-1/16	46	55
120255	3	6,600	4"-8-1/32"	51"	14-3/8	13-1/2	13-15/16	4-5/16	13/16	1/8	7-21/32	77	91
120256	5	11,000	4-1/4"-8-1/32"	55"	15-1/8	15-3/8	15-29/32	4-3/4	13/16	1/8	8-3/41	10	124
120257	10	22,000	4-5/8"-8-1/32"	67"	15-15/16	18-1/2	19-5/8	5-29/32	1-1/4	1/8	11	196	236

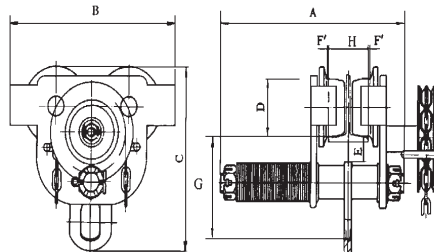
JET SGT SERIES BALL BEARING GEARED TROLLEYS

All units now have standard 8" capacity bolts for use on wider beams – Check & Compare!



Hardened steel wheels meet ANSI B30.11 standards – Check & Compare!

- Geared drive wheels with ball bearings
- Use on straight or curved track
- Can be installed or removed at any point along the track
- Adjustable to fit various sizes of wide flange and I-beams
- Extended length hand chain available
- Built-in bumper guards and drop stops
- Specially hardened steel wheels meet ANSI B30.11 and EEC specifications (Certificate included)
- Up to 8" beam standard



Extension kits available See page 21

PROD. NO.	Rated Cap'y (Tons)	Rated Cap'y (lbs)	I-Beam Flange Width (H)	Min. Radius Curve	Dia. Length of Chain	DIMENSIONS IN INCHES						Wt. G	Net Wt. (lbs)	Ship (lbs)
						A	B	C	D	E	F			
120362	1	2,200	4"-8-1/32"	40"	3/16"x10'	10-3/4	10-1/4	9-3/8	2-15/16	1-1/4	1/8	5-13/64	40	47
120364	2	4,400	4"-8-1/32"	43"	3/16"x10'	13-5/8	11-7/8	10-15/16	3-1/2	1-1/16	1/8	6-1/16	57	67
120365	3	6,600	4"-8-1/32"	51"	3/16"x10'	14-3/8	13-1/2	13-15/16	4-5/16	13/16	1/8	7-21/32	90	106
120366	5	11,000	4-1/4"-8-1/32"	55"	3/16"x10'	15-1/8	15-3/8	15-29/32	4-3/4	13/16	1/8	8-3/4	121	140
120367	10	22,000	4-5/8"-8-1/32"	67"	3/16"x10'	15-15/16	18-1/2	19-5/8	5-29/32	1-3/4	1/8	11	209	246